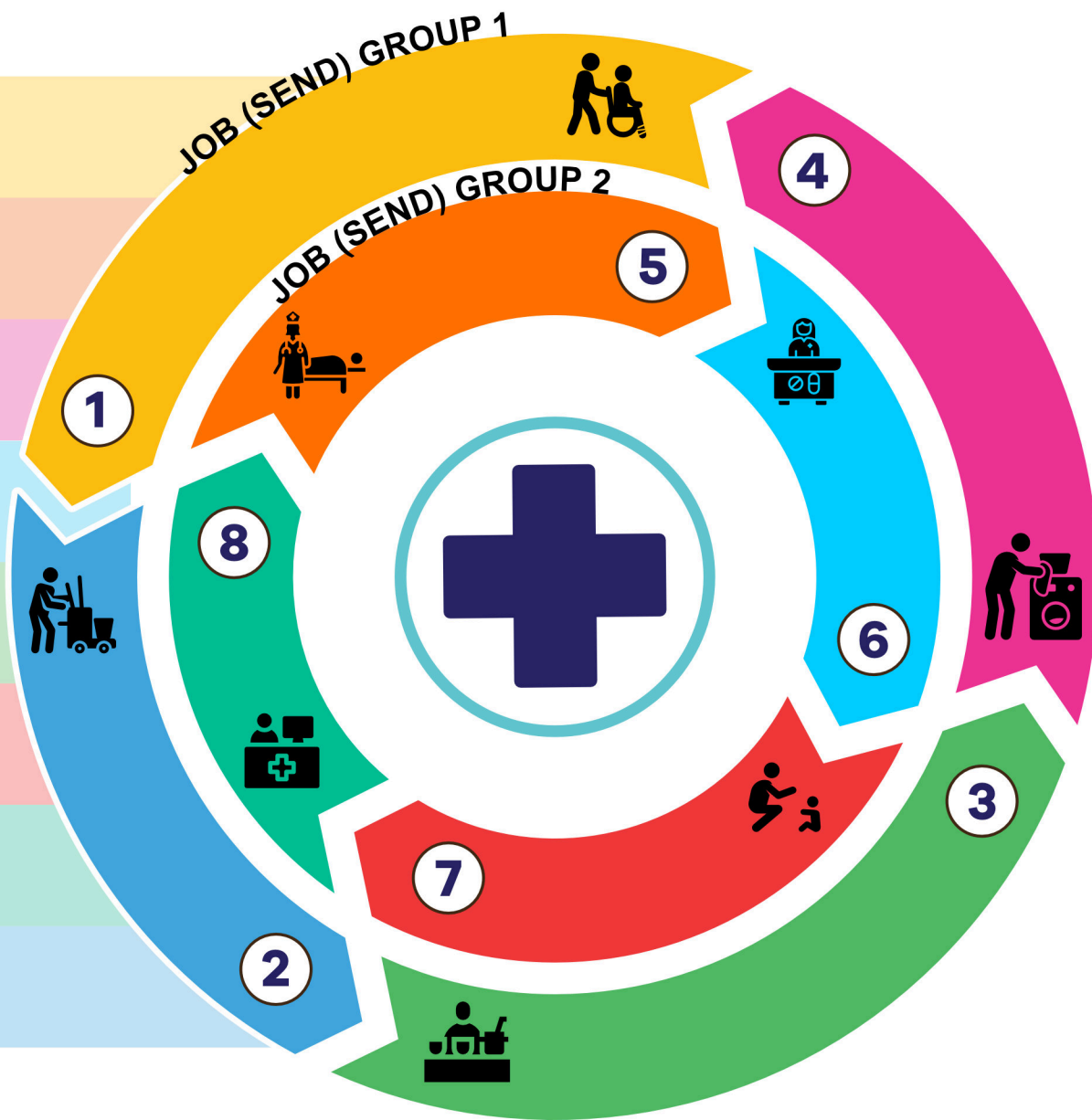


# HEALTH & SOCIAL CARE

# WHAT JOBS CAN YOU DO?

From hospital shops to meal delivery and art activities with elderly residents, discover hands-on roles where you can make a difference!



## JOB GROUP 1

don't require Level 2 Qualifications / GCSEs but can lead to supported employment, Supported Internships, Inclusive Apprenticeships, supported Enterprise, T-Levels, Traineeships and FE College.



### Hospital Porter

They help to move patients, equipment and medical supplies around a hospital.

Annual Salary  
£22,000 - £24,000



### Domestic Worker

They carry out general cleaning of hospitals, care homes and offices.

Annual Salary  
£17,000 - £24,000



### Kitchen Assistant

They cook food in hospitals and other services making sure patients and staff have nutritious, high quality food.

Annual Salary  
£11,500 - £16,500



### Laundry Assistant

They wash, dry and fold linens and residents, clothing, as well as keeping the laundry area organised.

Annual Salary  
£16,500 - £22,000

## JOB GROUP 2

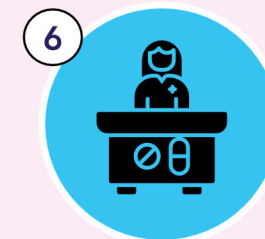
do require at least Level 2 qualifications / GCSEs and can lead onto a Apprenticeships, University, College, Employment or Enterprise.



### Healthcare Assistant

They assist nurses, providing basic patient care in hospitals or clinics.

Annual Salary  
£22,000 - £28,000



### Pharmacy Assistant

They prepare medications, manage inventory, and assist customers.

Annual Salary  
£22,000 - £28,000



### Play Worker

They support children's activities and basic needs in educational or daycare settings.

Annual Salary  
£14,500 - £22,000



### Medical Secretary

They manage administrative tasks and patient records in healthcare settings.

Annual Salary  
£17,500 - £24,000



**TALENTINO**

The CEC has adopted Talentino's #SameAndDifferent model, a national SEND school career framework designed to deliver effective career activities for young people with SEND. Developed from Talentino's work in schools, this concept enhances early career development and encourages employers to support the progression of individuals with SEND.