

Childrens Disabled Register October Half Term Information Sheet



What's on this Half Term for Children and Young People in Newcastle

October Holidays will be here soon so why don't you have a look at some of the great things that your children could be doing. Below is just a taste of things that they could be trying out and on the Newcastle Local Offer Webpage your first port of call for information, advice and support you will find much more.

[www.newcastle.gov.uk/local offer](http://www.newcastle.gov.uk/local%20offer)



11th Annual Parent Carer Conference

Wednesday 14th November 2018

BOOK NOW

Please book your place(s) as soon as you receive this newsletter as places go quickly and are limited. Closing Date to secure place is Friday 2 November 2018.

Please contact Children with Disabilities Admin Team on

0191 277 4700.



Max Cards

Your child's max card can be used at venues over the North East Region and across the United Kingdom. The max card offer you and your family free or discounted entry to a number of museums, galleries and cultural venues as well as fun activities. It is worth checking with the venue before you visit how many people in the family the max card will admit as venues differ.

For other great ideas <http://www.mymaxcard.co.uk/>

We have looked at the max card website and found The Blue Reef Aquarium and The Life Science Centre are offering great deals when you visit them using your max card.



Blue Reef Aquarium Tynemouth

Kids go free!

Enjoy close encounters with hundreds of incredible aquatic creatures! Come face to face with everything from adorable seals and otters to clownfish, seahorses and graceful stingrays. Meet the monkeys and reptiles in the stunning Amazonian feature!

A full programme of entertaining talks and feeding displays take place throughout the day including the amazing seal show.

Tickets are valid all day, so join us for the ultimate undersea safari.

How to Redeem:

Present your Max Card at the desk.

Terms and Conditions:

- The Max card entitles one child free to free entry with a paying adult
- Not to be used in conjunction with any other offer or family ticket.
- Photocopies not accepted.
- One free child per fully paid transaction.

Contact details

<http://www.blureeafaquarium.co.uk/tynemouth/>

Phone: 0191 2581031

Address: Blue Reef Tynemouth

Grand Parade, Tynemouth

Tyne & Wear

Email: tynemouth@blureeafaquarium.co.uk

Life Science Centre

Life Science Centre - One child goes free (science centre only) with a full paying adult. Visit the Life Science Centre for fun, educational days out for kids, families and adults in Newcastle upon Tyne.

Now established as one of the most successful of the country's 14 landmark Millennium projects, Life is an independent and self-funding charitable trust with a robust business plan that eliminates reliance on public funding for its operating costs.

Our packed programme includes science activities for all ages from pre-school to adults, including special events and birthday parties. We're a great destination for school trips and groups visits, and during the winter you can even go ice skating on our outdoor ice rink.

Access Information: Level access and lifts to all floors, wheelchair hire (subject to availability), disabled toilets, disabled parking available on request.

One child goes free (science centre only) with a full paying adult.

How to Redeem: Present your Max Card on arrival.

Terms and Conditions: Maximum of 2 adults and 2 children per Max Card.

- Not to be used in conjunction with any other offer, including concessions.
- This offer is non-transferable and cannot be used as part payment towards an Annual Pass.
- Excludes Skating@Life.
- Management reserve the right to refuse admission.

Contact details

<http://www.life.org.uk/>

Phone: 0191 243 8210

Address: Centre for Life Times Square Newcastle upon Tyne

Email: info@life.org.uk

**FRESH CLUB NIGHT
FOR TEENAGERS**

The Twisting Ducks
Theatre Company

**25th Sep
alphabetti
THEATRE**

FRESH CLUB NIGHT
FOR TEENAGERS 13-17

**Because we all love
a dance**

Fresh Club night for people with learning disabilities
and autism in Newcastle since 1998

**alphabetti
THEATRE**

Contact Twisting Ducks for more information

Heaton Centre
Trewitt Road
Heaton
Newcastle upon Tyne
NE6 5DY
Tel:07925167775

Email: info@thetwistingducks.co.uk

Website: thetwistingducks.co.uk



Join The Twisting Ducks Theatre Company's Academies



Changing lives through the arts

Creative sessions throughout the week for people with learning disabilities and autism

 <h2>Band Academy</h2> <p>Learn music skills, record your own songs, and perform at gigs and events. Tuesdays, 10 - 4 pm Twisting Ducks Studio, The Heaton Centre, Newcastle</p>	 <h2>DJ Academy</h2> <p>Learn DJ'ing skills and DJ at the FRESH Club night. Thursdays, 10 - 1 pm Twisting Ducks Studio, Heaton Centre, Newcastle</p>
 <h2>Performing Arts Academies</h2> <p>Develop skills in drama and theatre production Tuesdays 10 - 1pm, Theatre Royal, Newcastle Tuesday, 1:30 - 4:30pm Theatre Royal, Newcastle Fridays, 1 - 4pm - Morpeth Methodist Church Saturdays, 10 - 4pm - Northern Stage, Newcastle</p>	 <h2>Youth Theatre Academy</h2> <p>Make your own theatre and film and perform in live shows Saturdays - 2:30 - 5:30pm - Theatre Royal, Newcastle Fridays - 4:30-6:30pm - Morpeth Methodist Church</p>

Academy costs

Full day sessions: £39 Half day sessions: £19.50 Evening sessions: £13 Free taster sessions available.
Contact us for more information or to apply

Tel: 07925167775

Email: info@thetwistingducks.co.uk Website: thetwistingducks.co.uk

Konnect

Inclusive creative music making please call for more information contact Jim on 07941 049722



The poster features a vibrant, abstract background with musical instruments and sound waves. At the top left, it says 'Knowledge Movement' in a stylized font. At the top right, it says 'Newcastle City Council' with a small logo. The main text reads 'inclusive. creative music making @kommunity' in a pink, bubbly font. Below this, the word 'konnect' is written in large, bold, black letters with a pink outline. Underneath 'konnect' is the tagline 'new music made by you every week!' in a pink, outlined font. The poster also includes illustrations of two large speakers, a keyboard, a drum, and a MASCHINE controller. At the bottom, it lists the dates: 'Dates: September: 11th 18th & 25th . October: 2nd 9th 16th & 22nd' and the time: 'Time: 5-6:30pm'. The contact information 'info: 07941 049722' is at the bottom left, and social media links for 'f konnect' and 'f kommunity' are at the bottom right.

Knowledge Movement

Newcastle City Council

inclusive. creative music making @kommunity

konnect
new music made by you every week!

Dates: September: 11th 18th & 25th . October: 2nd 9th 16th & 22nd Time: 5-6:30pm

info: 07941 049722

f konnect

f kommunity

Junk Music

An 8 week project for children
with and without additional needs aged 8 -12
(siblings and parents/carers also welcome).

Make and play musical instruments using recycled
materials.

Create your own music and plan a performance using
your new skills and instruments.

At Nunsmoor Centre,
Studley Terrace, Fenham NE4 5AH

Please contact Alyson 0191 277 4400
for more details and to book a place.

Tuesday 2, 9, 16, 23 October 2018
6, 13, 20, 27 November 2018
5 – 6.30pm

Music-making is life-changing.
Youth Music believes every child should be given the chance to
make music.



National Foundation for
Youth Music
supported by public funding from the
ARTS COUNCIL
ENGLAND



LAING

ART GALLERY



SATURDAY ART CLASSES FOR 8yr olds and over.

2018

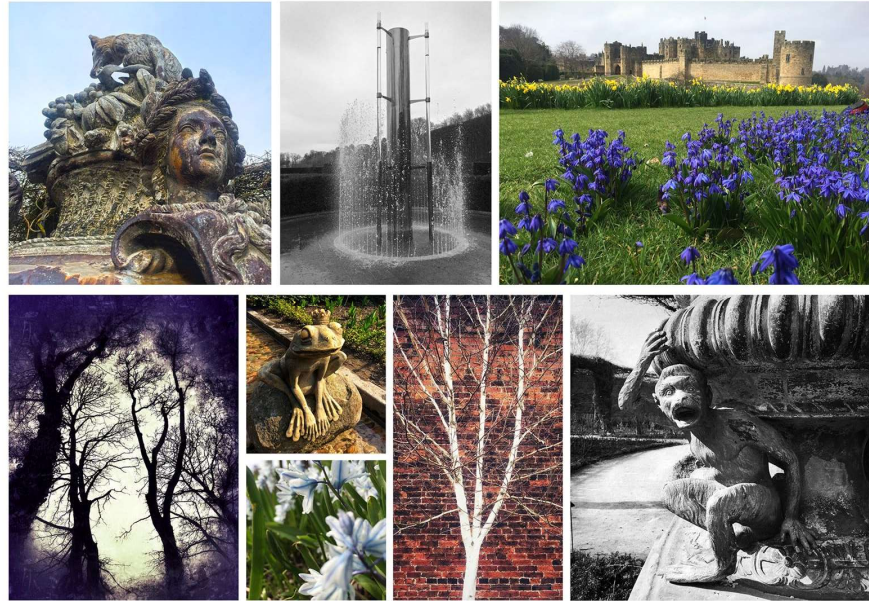
October 6th, November 3rd, December 1st.

Activities will include making a booklet to fill with your favourite pictures, a wildlife mobile, and brushing up on drawing and painting techniques. Meet at the reception at 10am, session starts at 10.15 and ends at 11.45

This group aims to be fully inclusive and anyone with additional needs is welcome. The classes are £4 per person, £2 second person. Places are limited to 15 places on a first come first served basis. Meet here at the Laing Art Gallery to take part and there is no need to book.

If you would like to have an informal conversation with the tutor before attending then please contact the Laing learning team on learning@laingartgallery.org.uk

PhotoClub



Preview celebration

Date - Saturday 8th September

Venue - Room 4 City Library

Time - 11-12 noon and 1-3pm

The exhibition is on floor 2 from 7th-19th September. If you would like to become a member of PhotoClub please contact Lynn; lynncam5@aol.com



Come and join our free, inclusive and family friendly sessions with art, music and outdoor exploration!

8th Sept - music
 15th Sept - art
 22nd Sept - music
 29th Sept - art
 6th Oct - music
 13th Oct - art
 20th Oct - music
 27th Oct - art
 3rd Nov - music
 10th Nov - art
 17th Nov - music
 24th Nov - art
 1st Dec - music
 8th Dec - art
 15th Dec - Winter Wonderland
 community event
 22nd Dec - art and music
 festive party!

Autumn / Winter 2018
Saturdays 1.30pm - 3pm

Scotswood Natural
 Community Garden,
 John Marley Centre,
 Whickham View,
 Newcastle upon Tyne,
 NE15 6TT

For more info call:
 (green weeks) Keith - 07981 149646
 (blue weeks) Sally - 07808 473300

Spooky night at the Discovery Museum - Halloween

Our Halloween party is set to be truly spooktacular!



Dates -Wednesday 31 October

Time -5 - 7pm

Price - £6 per child aged 1 and over (under 12s)
£2 per adult
Babies FREE

Each group must be a mix of adults and children

Limited tickets available, advance booking essential (small booking fee applies) Book online now

Please note, this event is most suitable for children aged under 7, however we welcome all the family to enjoy the Halloween fun and frolics.

About

Calling all little monsters, ghosts and ghouls, our Halloween party is set to be truly spooktacular! Come to the Museum in your best Halloween dress for a frighteningly fun evening. Some of the terrific activities on offer will include:

- Bewitching Tales
- 'Bugs & Stuff' animal handling
- Creepy Crafts
- Devilish Disco in the Great Hall
- Ghoulish games
- Fright night fancy dress competition for the little and not so little ones!

No tricks, just treats!

Discovery Museum Days: Circus

Drop-in family activities



Dates

Tuesday 23 October

Thursday 25 October

Tuesday 30 October

Thursday 1 November

Visitor Information

Time -Drop in, 10am until 2pm

Price

Some activities may have a small charge.

About

Take part in our circus family activities to celebrate the launch of our new exhibition Circus! Show of Shows (opening 20 October).

Decorate a key ring and make a flying acrobat. How fast can you make it move?

The Fun's All Free

at the
Alan Shearer
Centre
Activity Centre



Saturday 15 September - Movie Day

Catch a favourite film on the big screen in our music room

Saturday 22 September - Make a mobile

Make a nature mobile from twigs and leaves to hang in your garden

Saturday 29 September - Autumn collages

There's lots to find in our Woodland Walk to make a seasonal collage

Saturday 6 October - Build a dinosaur!

We'll have lots of card, paper, paint and glue to create your own dinosaur

Saturday 13 October - Stomp music session

Make a musical instrument from upcycled junk - then as much noise as you like!

Saturday 20 October - Build a scarecrow

Bring along some old, unwanted clothes and we'll help you make a scarecrow

Friday 26 October - Adults Halloween Party

Join us between 5.30 and 7.30 - But please call to book your place!



Saturday 27 October - Halloween lanterns

Make a Halloween lantern for when you go out Trick-or-Treating

All activities take place between 12 noon and 2pm unless otherwise stated.

Please note that activities may be subject to change.

Plus all our regular *FREE* facilities

- Giant Ball Pool
- Hydrotherapy Pool
- Music Room
- Sensory Rooms

Booking is essential. For more information, please call our Centre Manager,

Amanda Head, on 0191 267 8118

Alan Shearer Centre • West Denton Close • Newcastle upon Tyne • NE15 7LU

www.alanshearercentre.org.uk

Do you know about our other two services based at the Centre?



Flexible, tailored respite care or longer holidays for both adults and children with profound and multiple disabilities.



Full time care in an enabling, homely environment for adults with complex disabilities and challenging behaviours.

Guests and residents have full, unlimited access to the Activity Centre's facilities.

If you would like more information our Manager, Jackie Dunn, will be delighted to speak to you. You can call Jackie on:

0191 267 8128

or email her at: jackie.dunn@alanshearercentre.org.uk



We are able to invest in new developments and provide enhanced facilities for disabled people through the fundraising support provided by the Alan Shearer Foundation.

The Alan Shearer Centre and the Alan Shearer Foundation are part of St Cuthbert's Care.

Company Limited by Guarantee Company Registration No 1645917 Registered Charity No 512912



Nunsmoor Centre Trust
a place for our community

presents

The Toy Library

Relaunch Event

The relaunch of our Toy Library will take place on:

Thursday 13th September 2018

from 11 a.m. - 12.30 p.m.

at Nunsmoor Centre

Light Refreshments will be served



The Toy Library will then run on a drop-in basis weekly on a
Thursday morning during term time:

New Toys & Games * Return Weekly / Fortnightly

*** Suitable for Babies, Toddlers and Pre-school children &
their Parents / Carers ***

Newcastle Trampolines Park and Gym – autism friendly sessions



Newcastle Trampolines Park and Gym, West Road, NE4 9LG, 0191 260 0508

Autism Friendly Trampoline sessions on Thursday 4-5pm for £2.00 and also Saturday 5-6pm for £6.00. Please call to book a session and payment is required the day before your session.

Hang out and Dance at Dance City

Come Dancing (on the floor, in the air and with lots of props and games) at these inclusive sessions of dance, movement and aerial.

Want to try the trapeze and the cocoons and dance upside down?

This group is inclusive and has limited places so that we can welcome all abilities and needs.

Pre booking recommended £5.50 per young person - ring **Dance City on 0191 2610505**

To discuss any particular/additional needs please contact Lynn Campbell from Dance Connect at lynncam5@aol.com or on 07906854092 before you book.

Times and Dates and who is it for?

21 Oct, 4 Nov, 2 Dec

10.30 – 11.30 An inclusive class for children up to age 10 (with their adults if appropriate)

11.45 – 12.45 An inclusive class for ages 10 and up (with parents/carers if needed)

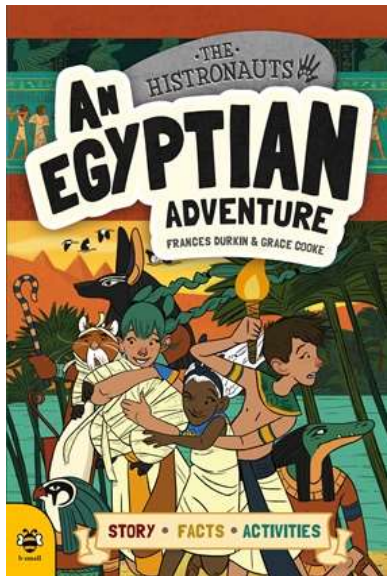
Teachers –

Lynn Campbell - Lynn is a Dance Movement Psychotherapist and worked as a teacher for children with SEND for over 20 years. She also teaches trapeze and movement play.

Keith Mills is a musician and SEND teacher – he brings his guitar and offers live music to accompany part of the session



Seven Stories



Afterlife with the Histronauts

Monday 29th October 11-11:45am and 2-2:45pm.

Join The Histronauts on this interactive journey into the extraordinary world of life after death in Ancient Egypt.

Preparation for death was an important part of ancient Egyptian life. This workshop will explore the fears, beliefs and rituals of the ancient world through storytelling and fun facts. Step back in time to learn about mummification, the Book of the Dead, secret tombs, and find out how the weight of a heart could help the gods decide what happened to a person's soul. You might even get to help make a mummy!

Session lasts 45 mins and is suitable for children aged 6-11 and their families. Tickets cost £3 per person (including children and adults). No visitor admission is required.

Venue: Seven Stories

Seven Stories, Ouseburn Valley, Newcastle upon Tyne, Tyne & Wear, NE1 2PQ

OUSEBURN FARM

Book Online www.ouseburnfarm.org.uk/whatson

OCTOBER HALLOWEEN ACTIVITIES				
BOOK ONLINE! WWW.OUSEBURNFARM.ORG.UK/WHATSON				
	MON 29TH	TUES 30TH	WEDS 31ST	THURS 1ST
10AM	SCARING THE BIRDS' DUMPING SESSION Orchard / Free / All ages	FARMERS' CLUB Join our team to help get the animals ready for the day! Farmyard / Free / Ages 6+	SLIME SCIENTISTS WITH DR FRANKENSUMME Create an array of eco-friendly slimes to spook your friends. Classroom / £5 per child / Ages 4+	FARMERS' CLUB Join our team to help get the animals ready for the day! Farmyard / Free / Ages 6+
11AM	SLIME SCIENTISTS WITH DR FRANKENSUMME Create an array of eco-friendly slimes to spook your friends. Classroom / £5 per child / Ages 4+	CACKLE & CRAFTS Classroom / Price varies per activity / Ages 4+	PUMPKINS & POTIONS Pumpkin carving and petrifying potions. Classroom / £5 per child / Ages 6+	REPTILE PAPER SESSION Give our reptiles a special spa session and get your arm painted just like a lizard! Small Animal Room / £5 per child / Ages 4+
12PM - 1230PM	HALLOWEEN ROLL CALL Line up for our daily roll call to let everyone know that the Ouseburn Ghouls and Monsters are about! Farmyard / Free / All ages	HALLOWEEN ROLL CALL Line up for our daily roll call to let everyone know that the Ouseburn Ghouls and Monsters are about! Farmyard / Free / All ages	HALLOWEEN ROLL CALL Line up for our daily roll call to let everyone know that the Ouseburn Ghouls and Monsters are about! Farmyard / Free / All ages	THE OUSEBURN APPLE BOBBING CONTEST 'Who dares wins!' Farmyard / Free / All ages
12.30PM - 1PM	ANIMAL LUNCHES Help us to feed the zombified sheep in the fields. £1 per feed bag / All ages	ANIMAL LUNCHES Help us to feed the zombified sheep in the fields. £1 per feed bag / All ages	ANIMAL LUNCHES Help us to feed the zombified sheep in the fields. £1 per feed bag / All ages	ANIMAL LUNCHES Help us to feed the zombified sheep in the fields. £1 per feed bag / All ages
1PM	PUMPKINS & POTIONS Pumpkin carving and petrifying potions. Classroom / £5 per child / Ages 6+	PUMPKINS & POTIONS Pumpkin carving and petrifying potions. Classroom / £5 per child / Ages 6+	PUMPKINS & POTIONS Pumpkin carving and petrifying potions. Classroom / £5 per child / Ages 6+	HALLOWEEN HOUND ROCKY ROADS Bring your trick o' treat stuff to the farm to transform into delicious rocky roads. Classroom / £3 per child / All ages
2PM	BREAD & BUTTER MAKING Our fit bread and butter class is back with a ghoulish twist! Classroom / £5 / All ages	CACKLE & CRAFTS Classroom / Price varies per activity / Ages 4+	CACKLE & CRAFTS Classroom / Price varies per activity / Ages 4+	SOW & GROW Join us in the garden to pot your own seeds to take home and grow! Garden / £3 per child / All ages
3PM	MEET THE ANIMALS SHOW Farmyard / Free / All ages	PETTING SESSION Creature comforts with our small animal! Farmyard / Free / All ages	PETTING SESSION Creature comforts with our small animal! Farmyard / Free / All ages	BREAD & BUTTER MAKING Our fit bread and butter class is back with a ghoulish twist! Classroom / £5 / All ages
4PM	PUMPKIN AUCTION Going, going, gone! Don't miss a bid on one of our fabulous pumpkins.	THE MONSTER BASH Music, treats, costumes... this is the BIG ONE! £10 per child (one accompanying adult goes free, £5 thereafter) ages 4+ / See poster for more details.	CRACKLING CRAFTS Crackling crafts to get you ready for bonfire night! Classroom / Price varies per activity / Ages 4+	PETTING SESSION Creature comforts with our small animal! Farmyard / Free / All ages

THEATRE ROYAL



Weekly Drama Workshops

Next term - September - December 2018

Our workshops and classes are open to young people aged between 5 & 15.

A New World -This term our groups will be devising performances that look back 100 years to the end of WWI, when a new world of medical, social & technological advances began, before performing them in week 10.

Term duration: 10 sessions

Cost per term: *£65

5-7 Years (A)

SATURDAYS 10.00am - 11.30am

Starting 29th September

The showback performance will take place on Saturday 22nd December at 11.30am.

5-7 Years (B)

SATURDAYS 12.00noon - 1.30pm

Starting 29th September

The showback performance will take place on Saturday 22nd December at 1.30pm.

****8-11 Years**

FRIDAYS 5.00pm - 6.30pm

Starting 28th September

The showback performances will take place on Friday 21st December at 6.30pm (Group A) and 7.15pm (Group B).

12-15 Years

WEDNESDAYS 6.30pm - 8.00pm

Starting 26th September

The showback performance will take place on Wednesday 19th December at 8pm.

To book a place on any of our courses for young people, please contact the Box Office on 08448 11 21 21 or select the highlighted class name to book online.

For further information on any of our courses, please contact Stacey Blackie (Learning Assistant) on 0191 244 2500

Please note the Learning department cannot process bookings



The Inclusion Project



For Young People with Autism aged 13 - 18
meeting on Thursday evenings at Thomas
Bewick School.

Young People will get the chance to meet new
people, learn new skills and most importantly
have fun. The focus of this group is to explore
possibilities in the community which young
people could be included in beyond the sessions.



We have a team of trained and experienced
staff and volunteers to support young people at
the group. We use Thomas Bewick School as a
safe space to enjoy sessions and as a base to
explore the community.



For more information and an application form

please contact;

charlotte.emmerson@new-prospects.org

07917215339





The Social Project



For children with Autism aged 8 - 12, meeting on Tuesday evenings at Thomas Bewick School.

Weekly fun sessions for children in Newcastle, a mix of sessions designed to increase skills and confidence based at Thomas Bewick School and regular visits to explore what is on offer for young people in the city.



We have a team of trained and experienced staff and volunteers to support children at the group. We use Thomas Bewick School as a safe space to enjoy sessions and as a base to explore the community.



For more information and an application form please contact;

charlotte.emmerson@new-prospects.org

07917215339



Sunday Strollers

A group for people of all ages, families welcome. We will explore the parks and other locations in Newcastle Upon Tyne. See dates, locations and times below. Free of charge and routes are around one hour.

All routes are wheelchair accessible. Toilets may not always be available.

Look out for Stephen in a yellow high-vis jacket at the locations.



21st October. Exhibition Park. NE2 4PZ

Meet outside of the café.

11.00am

28th October. Nunsmoor Park. NE4 5AH.

Meet outside of The Nunsmoor Centre.

3.00pm



4th November. Jesmond Dene. NE7 7BQ.

Meet by the visitors centre, next to pets corner.

11.00am

11th November. Hodgkin Park. NE15 6JL.

Hodgkin park is split into two parts, we will meet at the top of the lower park, near St Joseph's church.

3.00pm



Stephen Douglas

Stephen.nct@outlook.com

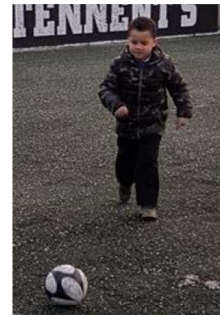
07944644284

Football at Kenton

A football club for children of all ages, under 18 years.



We practice football skills such as passing, dribbling and shooting. We also play games like 'Duck, Duck, Goose'. We sometimes play games of football and promote opportunities to interact and play with each other.



Kenton Park Sports Centre. Saturday, 11-12. £1.00.

Booking is essential.

**SPORTS
CONNECT**


Nunsmoor Centre Trust
a place for our community

Newcastle
City Council 

Stephen Douglas

Stephen.nct@outlook.com

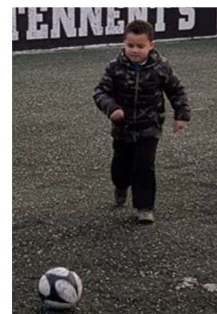
07944644284

Westgate Tigers

A football club for children of all ages, under 18 years.



Games, development of football skills and more. A great space for social opportunities.



Soccerworld, Westgate road. Wednesday, 4.30-5.30pm. £1.00.

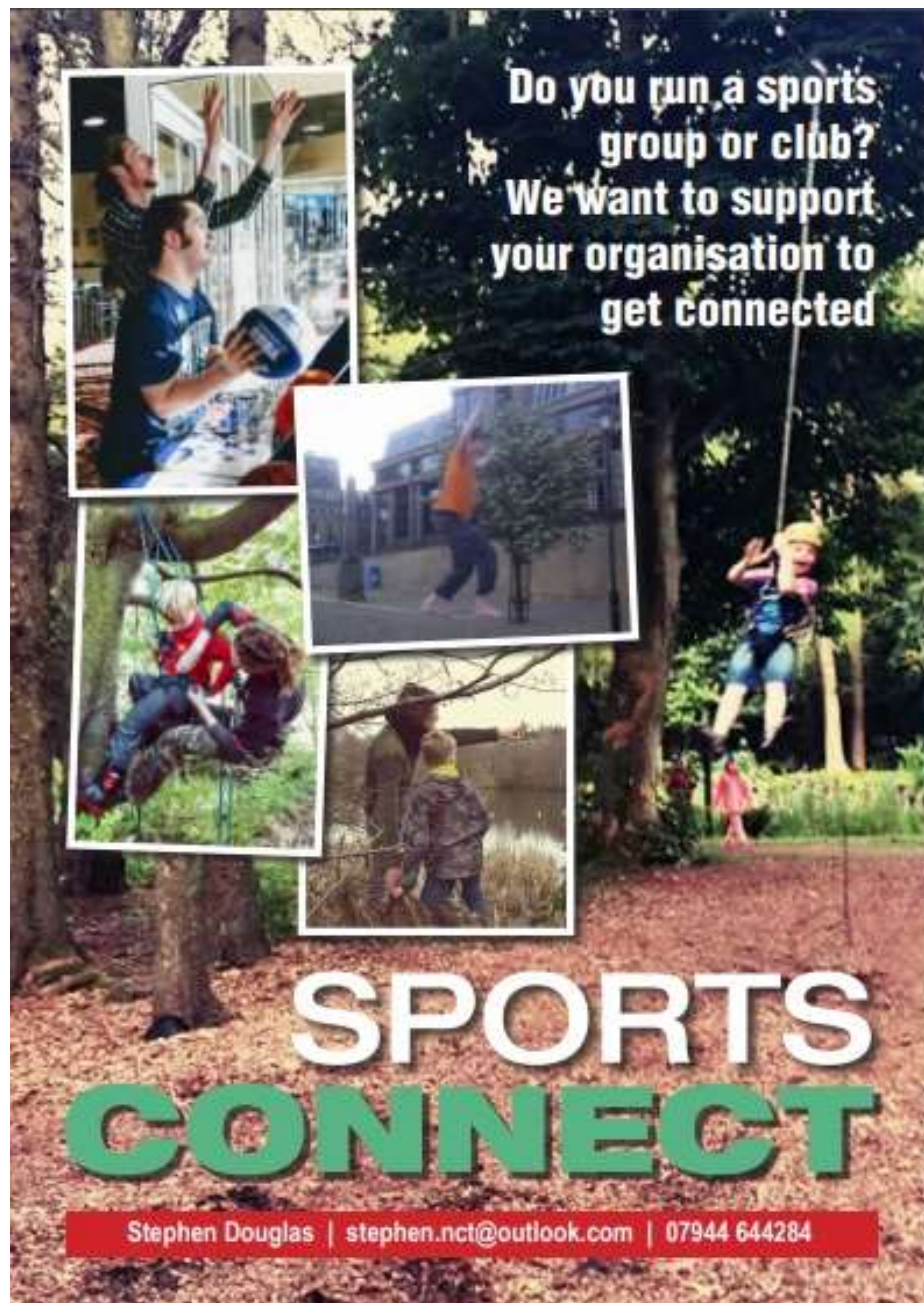
Support by our volunteer coach Nathan Topping.



Stephen Douglas

Stephen.nct@outlook.com

07944644284



**Do you run a sports
group or club?
We want to support
your organisation to
get connected**

SPORTS CONNECT

Stephen Douglas | stephen.nct@outlook.com | 07944 644284



SPORTS CONNECT

For young people in Newcastle-upon-Tyne with additional needs.
We will help you get connected and included in local sport activities

f @SPORTSCONNECT



Newcastle
City Council

Nunsmoor Centre Trust
a local support community

Working with the Nunsmoor Centre Trust and Newcastle City Council

The Toby Henderson Trust

The Doorway to Early Action in Autism

EVENTS AND WORKSHOPS 2018/19



Event	Date	Location	Price
Life after Diagnosis – Evening Session <i>Light refreshments Included</i>	Tuesday 25 th September 5.30pm – 8.30pm	Toby House	Registered families £7.50 Per person Non – registered families £15 per person Professionals £40 per person
Sensory Issues Workshop	Friday 5 th October 10am – 12noon	Toby House	Registered families £5 Per person Non – registered families £10 per person Professionals £30 per person
Autism Friendly Swimming session	Saturday 6 th October 4.45pm -5.45pm	Concordia Leisure centre	£5 per swimmer
Newcastle Stampede	Sunday 14 th October	Newcastle race course	£37.50 per entry
Autism Friendly Photo session	Saturday 20 th Oct 10am – 4pm	Toby House	£10 per half hour slot
Mental Health and Autism FULLY BOOKED	Tuesday 6 th November 10am – 12noon	Toby House	Registered families £5 Per person Non – registered families £10 per person Professionals £30 per person

Managing Meltdowns Workshop	Friday 23 rd November 10am – 12noon	Toby House	Registered families £5 Per person Non – registered families £10 per person Professionals £30 per person
Ladies Night	Monday 26 th November 6pm - Late	Newcastle Racecourse	£35 per ticket
Christmas Fayre	Saturday 8 th December Time 11am – 2pm	Toby House	Free entry
Christmas Lunch	Sunday 9 th December 12noon – 3pm	The Royal Station Hotel Newcastle	Prices to be confirmed.
Sleep Workshop	Friday 18 th January 2019 10am-12 noon	Toby House	Registered families £5 Per person Non – registered families £10 per person Professionals £30 per person
Mental Health and Autism Workshop	Monday 28 th January 2019 10am – 12noon	Toby House	Registered families £5 Per person Non – registered families £10 per person Professionals £30 per person
Social Stories and Comic Strip Conversations Workshop	Thursday 7 th February 2019 6pm – 8pm	Toby House	Registered families £5 Per person Non – registered families £10 per person Professionals £30 per person
Toby's Trail 2019	Date to be confirmed	Toby House and surrounding area for trail	Sponsored event for children and families
Using Visual Aids to support ASD Workshop	Thursday 2 nd May 2019 6pm – 8pm	Toby House	Registered families £5 Per person Non – registered families £10 per person Professionals £30 per person
Toby's Garden Music Festival 2019	Date to be confirmed	Toby House	
Great North Run	September 2019	Newcastle	£65 per runner with a minimum £250 sponsorship pledge

Contact details

Telephone – 0300 365 3055 / Email – support@ttht.co.uk



Useful Vision provides positive opportunities and activities for vision impaired children aged 0-19 and their families in the North East.

Join us in October, November & December!

Bowling Party at Ruff n Tumble Adventure World, Newton Aycliffe. The bowling alley is fully accessible and all abilities are welcome. Enjoy two games of bowling, followed by a cold buffet for families to socialise. **Sunday 7th October, 1-3.30pm.**

Skills Workshop at Skills 4 U NE, Cramlington. Use and develop skills learnt in previous sessions in a real-life scenario or come and learn new skills. Plan a trip in the October session to take place in the November session. Suitable for VI children aged 9 and over. **Saturdays 20th October & 17th November, 10am-12.30pm.**

Halloween at Hall Hill Farm, Lanchester. Halloween activities fancy dress, lantern carving with pumpkins from the pick your own patch, scarecrow-making, maze, face-painting, treasure hunt and puppet show. Pet and feed the animals and enjoy the other attractions. **Wednesday 24th October 2018 11am-3pm.**

Halloween Spooktacular at Frighthouse Farm, Morpeth. Halloween grim grotto walk-through, witches and wizards school, Halloween arts and crafts and pumpkin carving! Halloween costumes encouraged! Exclusive petting sessions and tractor rides. Meet the animals and see the other attractions. **Sunday 28th October, 10am-3pm.**

Family Day at Newburn Activity Centre, Newcastle. Activities will include trampoline, indoor climbing wall, archery, adapted bikes and soft play. **Monday 29th October, 10am-2pm.**

BBC Studio Tour, Newcastle. BBC Newcastle is the hub of the BBC in the North East and Cumbria. The tour will be fast paced, exciting and have many interactive elements. Be a CBBC presenter or present the news and weather. No two tours are the same, but they are always informative, interesting and fun. **Thursday 1st November, 10.30am-12pm.**

Bowling & Pizza Party at Wentworth Leisure Centre, Hexham. Bowling followed by Pizza afterwards for families to socialise. The bowling lanes are fully accessible and all abilities are welcome, come along and have a go! **Sunday 4th November, 12-1.30pm.**

Festive Family Day at Hall Hill Farm, Lanchester. Meet Santa and sit in his sleigh and visit the elves' workshop to make your own Christmas decoration. Have a donkey or tractor ride and visit the animals in their winter stables. **Sunday 2nd December, 11am-3pm.**

Sensory Christmas Party at Northburn Community Centre, Cramlington. Craft, sensory tray, soft play, ball pool and Seb and Olivia's Den sensory room. Musical fun and face painting. Mince pies and festive treats are provided. **Saturday 8th December, 1.30-3pm.**

Robinson Crusoe Pantomime at The Village Hotel, Newcastle. The Panto Company's production of Robinson Crusoe is a delight for both children and adults, packed with music and laughter. Before and after the pantomime meet the actors and touch the props. **Sunday 16th December, 12-3pm.**

If you have a vision impaired child and would like to register with Useful Vision or are already registered with Useful Vision and would like to attend an activity, please contact the office on 0845 604 8491 or email office@usefulvision.org.uk. Registration for families with a vision impaired child is free and most activities are free to attend.

Useful Vision are recruiting new volunteers to assist us during activities. Gain valuable experience and make new friends. Full training is provided, all you need is kindness and enthusiasm! If you are interested in this opportunity please contact Louise Carlyle-Mitchell on 0845 604 8491 or email louise@usefulvision.org.uk.

Please note - The information is compiled by the Children with Disabilities Team and is correct when printed. We cannot accept responsibility for any changes that organisations make at a later date. Please check with individual organisations before you visit.